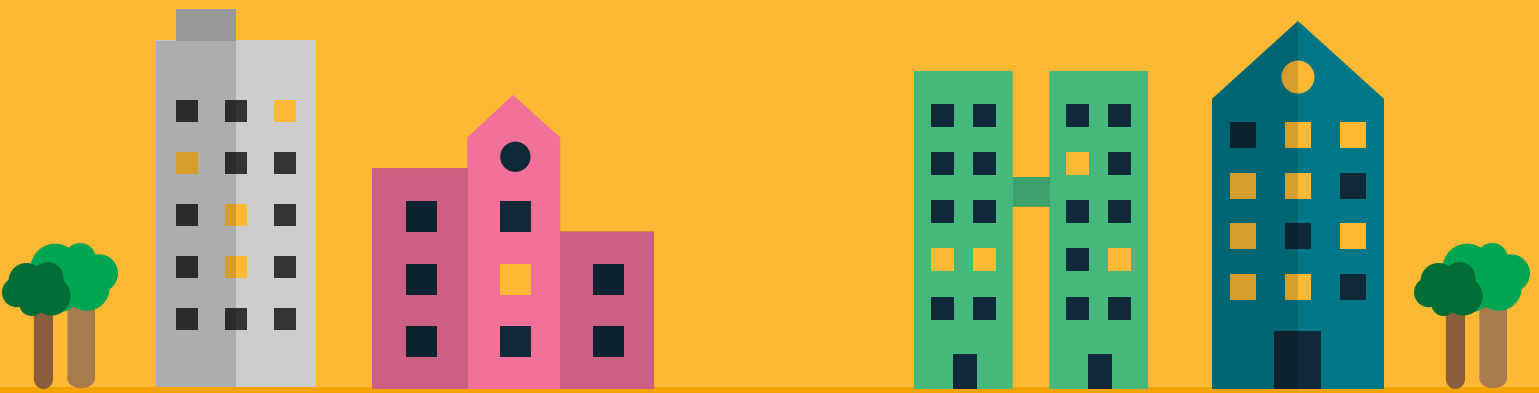


# PUBLIC HEALTH AND ENVIRONMENTAL ASSESSMENTS

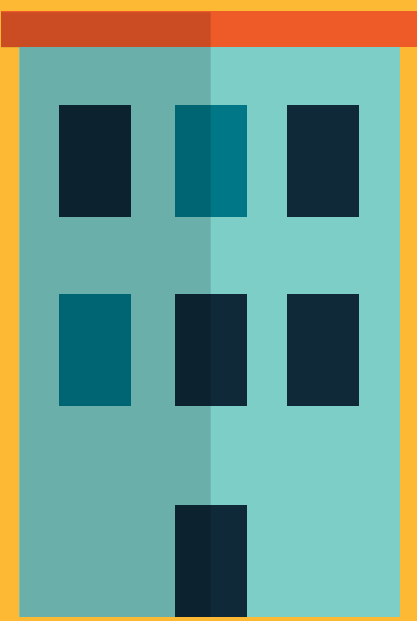


## What is an EA?

EAs predict environmental effects of proposed initiatives before being carried out. This process is used to minimize adverse environmental effects before they occur and influence decision-making. EAs consider factors concerning the natural environment, economic, social, cultural and technical environment.

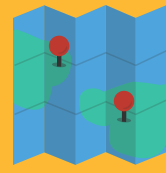
# 50%

OF PUBLIC HEALTH UNIT STAFF ARE "NOT FAMILIAR" WITH INDIVIDUAL EA



## STRENGTHENING PUBLIC HEALTH INVOLVEMENT IN EAs

- INTERNAL CAPACITY BUILDING
- KNOWLEDGE BUILDING (E.G. DEVELOP WEBINARS)
- UPSTREAM INTEGRATION OF PUBLIC HEALTH IN THE EA PROCESS



PUBLIC HEALTH UNITS CURRENTLY CONTRIBUTE IN AREAS SUCH AS:

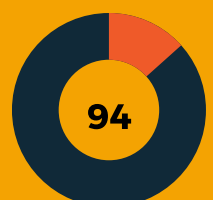
1. IMPACTS TO AIR QUALITY (87%)
2. IMPACTS TO COMMUNITY SAFETY/INJURY PREVENTION (87%)
3. IMPACTS TO TRAVEL (ACTIVE TRANSPORTATION) (80%)
4. IMPACTS TO WATER & SOIL QUALITY (73%)
5. CLIMATE CHANGE IMPACTS (73%)

# 54%

54% OF RESPONDENTS PARTICIPATE IN THE EA PROCESS



20% OF THIS GROUP VERY REGULARLY PARTICIPATE IN EAs



94% RESPONDENTS WOULD LIKE TO GET MORE INVOLVED IN THE EA PROCESS